

STYLAGE®
IPN - Like TECHNOLOGY

Bi-SOFT®
INJECTION TECHNOLOGY

TECHNOLOGY ON THE MOVE

NEW

A new
VOLUMIZER
for a successful
FACIAL
VISCOSCUPTING.

XXL
MEPIVACAINE

An **INNOVATIVE** and **PATENTED** formulation¹.

טל: 03-7589090
www.omegamedix.co.il

משווק בלעדית ע"י אומגהמדיקס בע"מ
רח' בזל 25 | ת.ד. 10256 | פ"ת 4900202


OMEGAMEDIX
THE BEAUTY OF MEDICINE


VIVACY®
PARIS

MEPIVACAINE'S INTEREST IN A VOLUMIZING PRODUCT

1- AN EFFICIENT ANAESTHETIC

Mepivacaine is a local anaesthetic which belongs to the same family as **lidocaine**⁸. Synthesized in 1957 and commercialized in France since 1964, it is mainly used in odontology and is known to induce less vasodilation than **lidocaine**⁹.

It has been incorporated into **STYLAGE® XXL** so as to provide additional comfort to the patients during injection and post treatment massage.

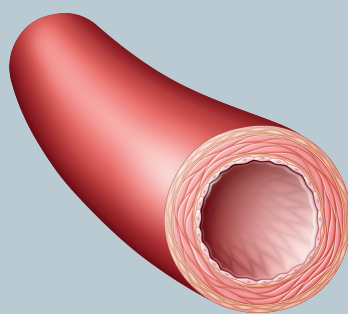
Mepivacaine is similar to **lidocaine** in terms of safety and efficiency. These two anaesthetics are also comparable for their onset of action (less than 5 minutes) as well as for their efficiency period (about an hour and a half)⁸.

2- ITS VASCULAR PROPERTIES

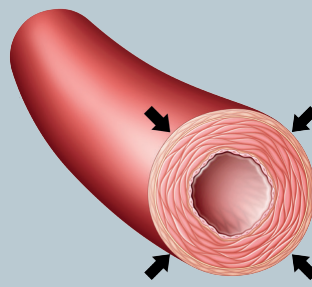
The pharmacodynamics features and efficiency of these two molecules are on the whole comparable, as it has been proven in the clinical study mentioned on the following page¹⁰.

Moreover, literature also states that **mepivacaine does not induce the vasodilatory effects of lidocaine**⁹.

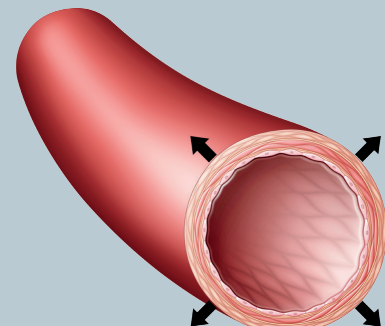
In addition, a study of 23 healthy volunteers who received mepivacaine by intradermal injection **highlighted a vasoconstrictor effect** with concentrations less than and equal to 0.3%¹¹.



NORMAL



VASOCONSTRICTION



VASODILATION

1. International Patent Delivered WO/2015/097261. Hyaluronic acid compositions including mepivacaine.

8. Tomin, J. & Al. Differences in local anesthetic effects of optically active isomers of local anesthetic compounds. *Biotechnol. & Biotechnol. Eq.* 20, 9-14. 2006.

9. Lindorf, H.H. « Investigation of the vascular effect of newer local anaesthetics and vasoconstrictors ». *Oral Surg.*, 1979.

10. A non-inferiority, prospective, randomised, double-blind intra-individual clinical study. Main objective: to evaluate the injection comfort of STYLAGE® dermal fillers with mepivacaine versus STYLAGE® with lidocaine in 2 areas: nasogenian folds (65 patients injected with STYLAGE® M mepivacaine versus STYLAGE® M lidocaine) and lips (41 patients injected with STYLAGE® S mepivacaine versus STYLAGE® S lidocaine). Follow-up at 1, 3, 7 days, 1 month, 3 months and 12 months after injection.

11. Fairley, J. W. and Reynolds, F. « An intradermal study of the local anaesthetic and vascular effects of the isomers of mepivacaine ». *Br. J. Anaesth.*, 1981.

